



TCS785 TRAWL SONAR

Forward Looker / Profiler / Downsounder

Unbeatable Bottom Differentiation

The model TCS785 is three sonars in one: forward scan, net profiler, and downsounder. These SMART sleds are available in two profiler frequencies, 180 kHz and 300 kHz. The lower the frequency, the longer the range.

More Information Means Increased Efficiency

The captain receives a wealth of information from WESMAR's trawl sonars. This information enables them to increase catching efficiency through shorter tows and reduced fuel consumption. Gear damage is also reduced by avoiding rough bottom and overfilling of the net.

The TCS785 trawl sonar is a "third wire" system that combine forward-looking and profiling in one headrope unit. Its split screen feature allows measurement of the net opening, profile of fishing circle, door spread and other gear geometry. The pressure sensor continuously monitors depth of headrope making it possible to align net and fish as they pass under the vessel.

Built rugged, yet lightweight, the TCS785 sled, when submerged, adds only 10 kg (21 lbs.) to the headrope.

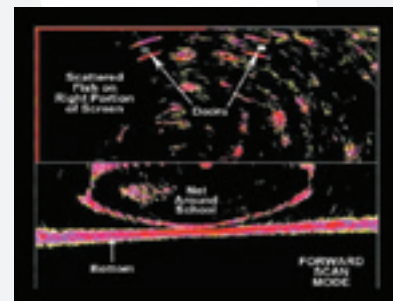
Features:

- Depth sounder shows vertical net opening, footrope, and bottom.
- Data output connects to compatible video sounders to view depth line/net position across the screen.
- Emits audible signal for triggered catch sensors and starts the timer visible on the monitor.
- Easily obtain net opening dimensions using your cursor.
- Forward Scan: Lets you view the doors forward of the net as well as schools of fish entering the net.
- Net Profiler: View 360° degrees or smaller sectors. Keep watch as the footrope tends the bottom or net. Monitor fish as they enter, go over, or under the net. Watch the net change shape with adjustments and cross currents effects.
- Downsounder: A full screen downsounder helping ensure that no fish go undetected.
- Split Screen: Downsounder over net profiler. Two transducers operate simultaneously for a double view. Downsounder monitors the footrope and bottom, and marks fish in center. The profile transducer scans the net opening in high resolution. Plus, you can make sure fish are not passing under the net by using the 'zoom-window' feature.
- Water Temperature and Depth: Sensors within the sled give you accurate information on these parameters at the headrope.

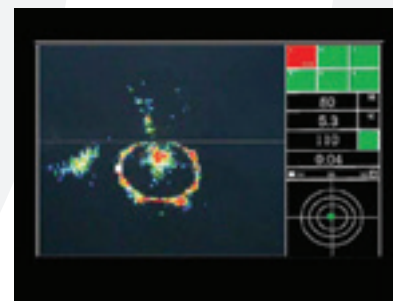


The TCS785-300 kHz (orange sled) has a higher frequency profiler with high resolution designed for smaller nets. At 300 kHz, the foot rope/bottom relation can be viewed in greater detail.

The TCS785-180 kHz (green sled) with a 180 kHz profiler is designed for larger nets with large vertical and horizontal openings.



TCS785 trawl sonar showing trawl doors and net around school.



Display panel is showing depth of headrope, water temperature, DC voltage to sled, and tow timer.

WESMAR TRAWL SONARS SAVE TIME, MONEY AND FUEL

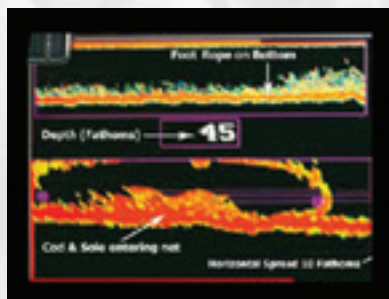
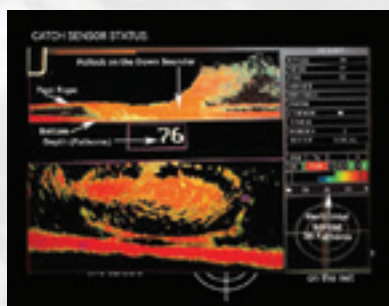
Captain Steve Mallinson, skipper of the Trawler, F/V BAY ISLANDER, (owned by Craig Cochran of Newport, Oregon) fishes the Oregon Coast and Alaska, trawling for hake near Newport, Oregon, and cod, sole and pollock out of Kodiak, Alaska.

Captain Mallinson has operated the BAY ISLANDER for 13 plus years, so has extensive experience on the vessel and the fishery, both bottom and mid-water trawling. His long experience has led him to use two WESMAR trawl systems, the TCS785 for mid-water and the smaller TCS385 for bottom trawling.

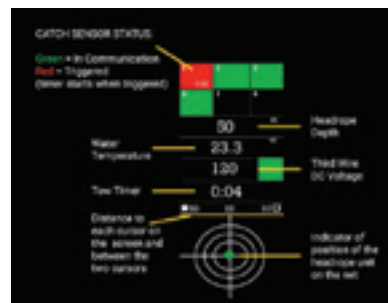
Captain Mallinson recently sent screen pictures showing how he uses the trawl sonar and in one example how he was able to set more wire to catch fish trying to dive under the footrope.

"The sonar helps me see what and how changes are made to the net so I'm not fishing blind. I can even identify specie based on characteristics of the schools."

"This helps not to under- or over-fill the nets. In split screen mode I have two pieces of information all the time. The guys with other systems only see one screen at a time. The WESMAR Trawl saves time, you know where you are all the time so it makes me more efficient. I'm not fishing blind which means more money and saves fuel," says Mallinson.



Sonar directional hand controller for getting on-target fast



Display panel is showing depth of headrope, water temperature, DC voltage to sled, and tow timer.



The TCS785-300 kHz orange sled has a higher frequency profiler with high resolution designed for smaller nets. At 300 kHz the footrope/bottom relation can be viewed in greater detail.



The TCS785-180 kHz green sled with a 180 kHz profiler is designed for larger nets with large vertical and horizontal openings.

TCS785 TRAWL SONAR

MODEL	FREQUENCY (FORWARD LOOKER)	FREQUENCY (NET PROFILER)	FREQUENCY (DOWNSOUNDER)
TCS785-180	110KHz	180KHz	110KHz
TCS785-300	110KHz	180KHz	160KHz

6108 188th Street N.E., Bldg. A100
 Arlington, WA 98223 USA
 Main: 425.481.2296
 Fax: 425.486.0909



Western Marine Electronics Company
www.wesmar.com