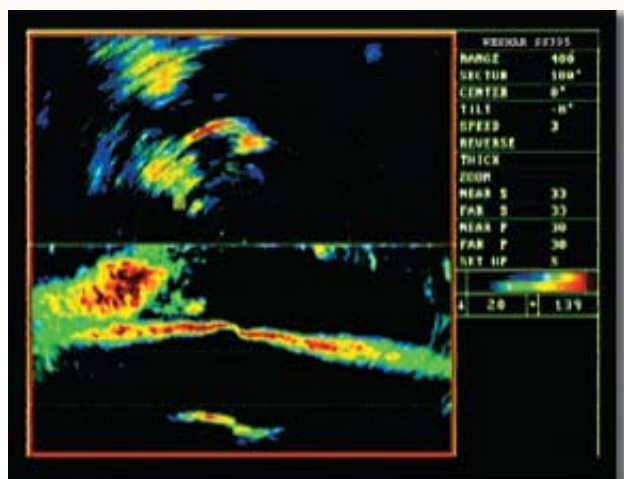


SS395 Sonar

Sonar specialise dans la Navigation et dans la Detection de Poisson.

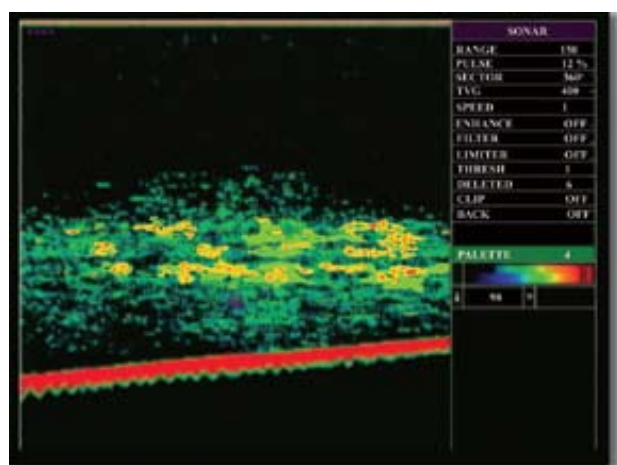
Le SS395 Sonar offre une double technologie consistant en Navigation et Detection de Poisson. Ces performances sont utilisees par les Professionnels de Peche et Yachts a travers le monde.



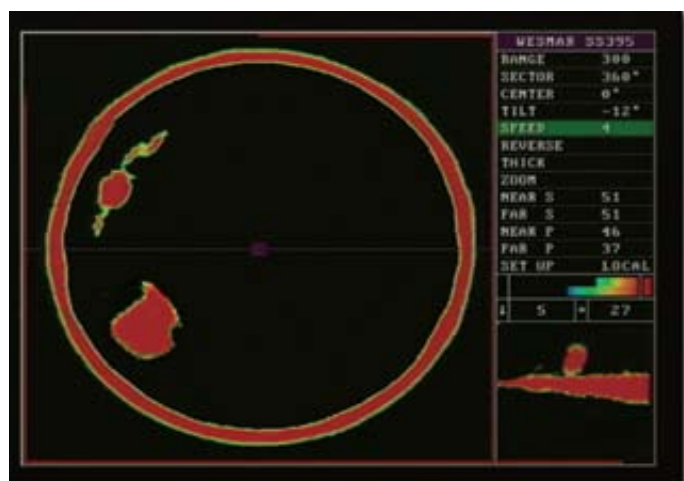
Le SS395 en mode ecran partage. Haut ecran montrant le banc de poisson devant et bas ecran montrant le poisson en fond.



Le SS395 en mode Profil.



Le SS395 en mode Sondeur montrant le banc de poisson en bas.

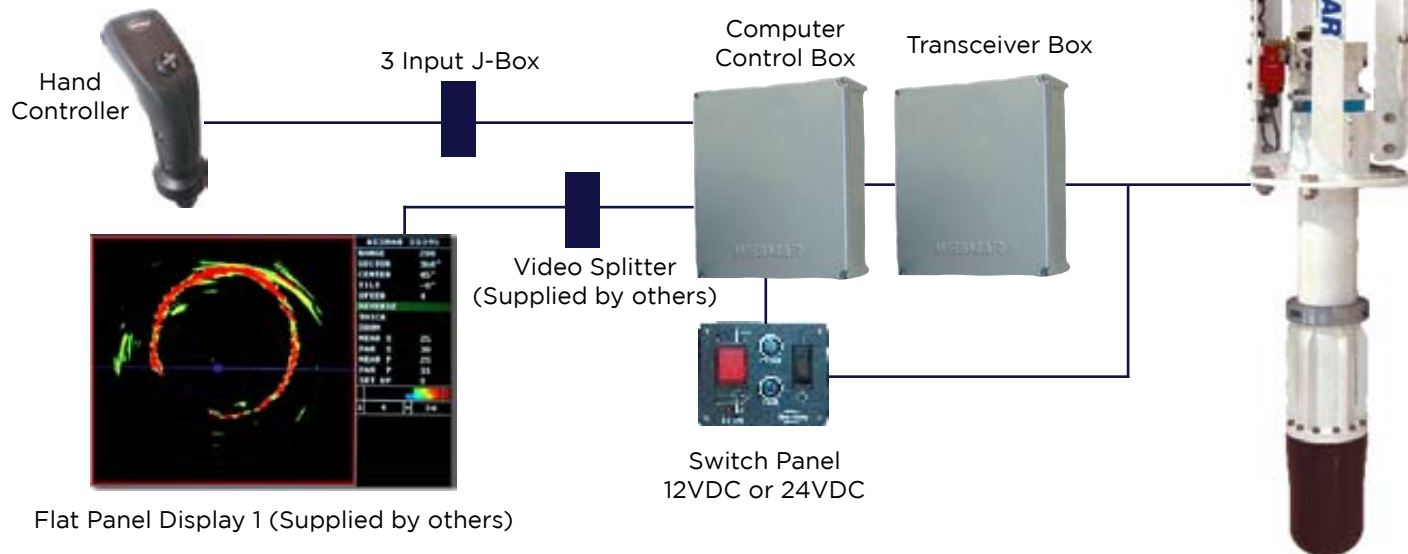


Le SS395 utilisant la vue de 360 degre et permettant de voir tout le fond.

Specifications du Sonar SS395

Le SS395 est disponible en 3 fréquences, chacune avec une puissance de transmission accrue et changement de secteur instantané. Plusieurs fenêtres d'affichages et Faisceau concentre.

Hydraulic Hoist & Soundome Assembly



SS395-E-60-110-160 Electric Hoist

SS395-E-160

Piece de Coque:
Hauteur: 50 cm
Déplacement: 20.3 cm
Diametre: 6 pouces
Temps de relevage: 19 sec
Sonar:
Puissance: 1000 watts
Faisceau: 6.5 conique.

SS395-E-60

Piece de Coque:
Hauteur: 60 cm
Déplacement: 30 cm
Diametre: 8 pouces
Temps de relevage: 24 sec
Sonar:
Puissance: 1200 watts
Faisceau: 14 H X 9 V

SS395-H-60-110-160 Hydraulique:

SS395-H-160

Piece de Coque:
Hauteur: 84 cm
Déplacement: 47 cm, 18in
Diametre: 6 pouces
Temps de relevage: 4 sec
Sonar:
Puissance: 1000 watts
Faisceau: 6.5 conique

SS395-E-60

Piece de Coque:
Hauteur: 60 cm
Déplacement: 30 cm
Diametre: 8 pouces
Temps de relevage: 24 sec
Sonar:
Puissance: 1200 watts
Faisceau: 14 H X 9 V

SS395-E-110

Piece de Coque:
Hauteur: 60 cm
Déplacement: 30 cm, 11 in
Diametre: 8 pouces.
Temps de relevage: 24 sec
Sonar:
Puissance: 1100 watts
Faisceau: 8 H X 5 V

SS395-H-110

Piece de Coque:
Hauteur: 84 cm
Déplacement: 47 cm, 18in
Diametre: 8 pouces
Temps de relevage: 4 sec
Sonar:
Puissance: 1100 watts
Faisceau: 8.5 H X 6 V



Western Marine Electronics

Telephone: (425) 481-2296 • Fax: (425) 486-0909

E-mail: shakimi@wesmar.com • www.wesmar.com

PRODUCT WARRANTY

Commercial warranty and consumer limited warranty, disclaimer, and remedies. Seller warrants title, materials, and workmanship on equipment, except components manufactured by others for which seller assigns, as permitted, the original manufacturer's warranty. Seller's warranty period for all applicable express or implied warranties shall be ninety (90) days after installation or one (1) year after date of shipment to the original buyer, whichever time period expires first. Nonconforming equipment reported to seller during the applicable warranty period and returned to seller at buyer's expense and risk shall be repaired, or replaced at seller's option. If seller is unable or unwilling to repair or replace such reported and returned nonconforming equipment within a reasonable time, then buyer shall be entitled to a refund of the purchase price of the equipment as buyer's sole remedy. This paragraph sets forth buyer's exclusive remedies for nonconforming goods. This commercial warranty and consumer limited warranty is in lieu of all other warranties, express or implied, including design, course of dealing, merchantability, and fitness for a particular purpose.

NOTE: LIMITATION OF SELLER'S COMMERCIAL AND CONSUMER LIABILITY. Seller shall not be liable on any claim for loss of use, revenue, or profit, for injury, or for any other incidental or consequential damages, regardless of the basis for buyer's claim(s), including, but not limited to, the law of contract, warranty, or tort. In no case shall seller's liability on any claim(s) exceed the amount paid to seller for the purchased goods.