



WESMAR™

Pleasure Boat Thrusters

Thrusters for Fiberglass, Aluminum, Steel and Wood Vessels 30 to 200 Feet

- Stainless Steel Props
- Low Maintenance Design
- Easy Retrofit and Upgrade
- More Thrust per Input Power
- Precise Control



Stainless Steel Bow and Stern Thrusters for Safe Maneuvering

DC Pro Bow and Stern Thrusters

Easy Retrofit, Multiple Options

•Easy Retrofit

Upgrading your vessel has never been easier. WESMAR's two bolt design allows for a simple drop-in installation on existing metric sized tunnels. Both the V2-7 and V2-10 M models replace Max Power, Side Power, and Vetus Thrusters.

Upgrade Models

V2-7 M	V2-10 M
24 or 48 VDC Proportional	48 VDC Proportional
Tunnel Size: 185mm	Tunnel Size: 250mm
Motor Sizes:	Motor Size:
24 VDC 6 hp Brushless	48 VDC 13 hp
48 VDC 13 hp	

•DC Pro Thrusters

Proportional Drive DC Electric

6-12 inch Thruster

Motor Sizes: 5 to 13 hp & 24 to 48 VDC or 23 hp & 48 VDC

WESMAR's proportional DC electric thrusters provide the advantages of continuous operation and proportional control. This allows the operator to apply the appropriate thrust for the docking operation without worry of thermal shutdown of conventional DC systems.

Direct Drive DC Electric

6-12 inch Thruster

Motor sizes: 5 hp at 325 amps-12 VDC or 13 hp at 400 amps-24 VDC

WESMAR's direct drive DC electric thrusters are available in two motor sizes and include the standard solenoid on/off switch control.



V2-7M DC Pro Thruster

•Bow and Stern Thruster Controls

Up to 6 control stations can be provided in either on/off or proportional control.

Electric or Hydraulic On/Off



AC, DC, Hydraulic Proportional Control



Where our thrusters work and what our customers say:

Large Thruster Application

115-foot MY Surprise



The 115-foot Motoryacht Surprise operates for private use and for charter in the South Pacific and is considered a 'Go anywhere yacht.' The custom built yacht has a 4,000-mile nautical range, and is outfitted with the best of everything and loaded with luxury and style. The 'go anywhere' part refers to the WESMAR 75 hp bow thruster, its key to docking in comfort, even in crowded conditions, tight slips, and difficult winds. The WESMAR enhances its docking and station keeping abilities as a dive vessel and a recreational out station as well.

Hydraulic and AC Bow and Stern Thrusters

A Powerful and Reliable Alternative to DC Drive

•Hydraulic Drives

WESMAR hydraulic systems are the result of years of experience utilizing load sense pumps, piston motors, proportional control valves, high and low pressure filtering, various sensing devices and a variety of tanks to fit space requirements.

•AC Electric

WESMAR provides AC electric thruster drives from 25 to 350 hp using reversible motors, frequency drives, and up to 5 fully proportional control stations.

Models

V2-8 NS

24 or 48 VDC Proportional

Tunnel Size: 8 inches

Motor Sizes:

24 VDC 6 hp Brushless

48 VDC 13 hp

V2-10-48/13 or V2-12-48/13

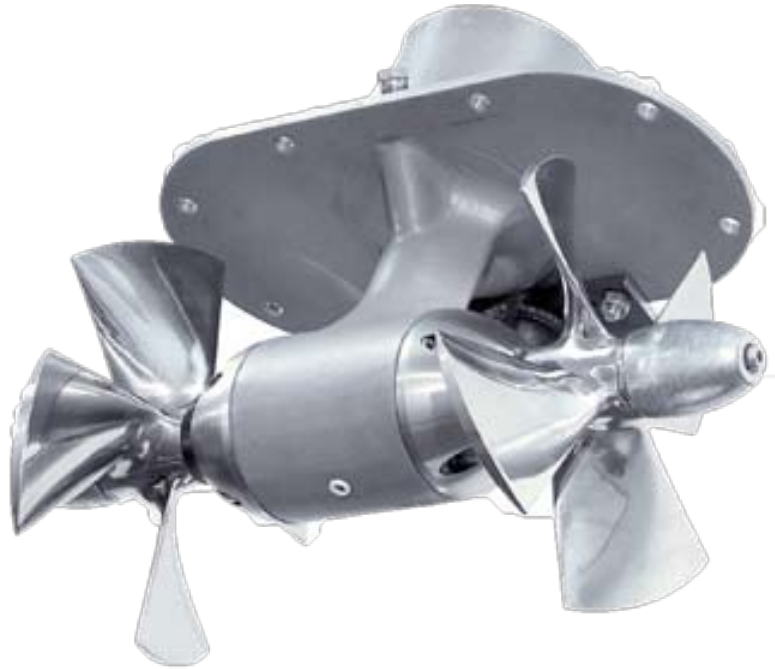
Tunnel Size: 10 or 12 inches

Motor: 48 VDC 13 hp

V2-12-48/23

Tunnel Size: 12 inches

Motor: 48 VDC 23 hp



V2-8 SS Bow Thruster

Where our thrusters work and what our customers say:

Stern Thruster Applications

49-foot MY Happy Hours



The 49-foot Happy Hours lives up to her name, thanks to the comfort of owning WESMAR bow and stern thrusters. "I'm able to dock her myself, even in tight, windy conditions, from the dual control station in the wheelhouse. Before the WESMAR thrusters I always used my throttle to dock the boat, something I perfected during my many years of operating without thrusters. Now I can't imagine docking without them. They work so well, they've made me lazy."

Captain Ron Anderson, Seattle, Washington

WESMAR Thruster Retrofit

80-foot MY Robin's Nest (23 HP DC Pro Thruster)



"The new WESMAR is awesome! It makes life easier when docking the boat because it is so powerful. I can walk the boat in and out of places in crowded marinas and have complete peace of mind. It is wonderful for high winds and tight quarters. I am very happy with it."

Captain Linda A. Lupi, Lazzara out of Miami, Florida

Standardize with WESMAR Products

WESMAR brings over four decades of design and manufacturing to the marine industry, providing equipment to commercial, private and government operations around the world. WESMAR's network of support includes over 350 trained service personnel, dealers and distributors who are dedicated to customer service.

•Anchor Windlass



WESMAR's stainless steel anchor windlass is uniquely designed with an electronically driven magnetic chain counter imbedded in the housing.

•Roll Fin Stabilizers



WESMAR's cutting-edge roll fin stabilizers vastly improve vessel handling and safety, save fuel, and provide exceptional comfort for passengers and crew. WESMAR's stabilizers electronically adjust to correct up to 90% of the roll, resulting in more efficient and relaxed traveling.

WESMAR also manufactures a full line of Trawl sonars, Bow and Stern thrusters for commercial vessels and sportfishing, and an Auxiliary Propulsion (Get-Home) system.



Commercial Thrusters



Trawl Sonar



APU

WESMAR Sonar Products

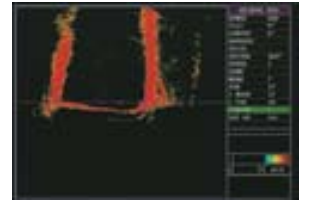
WESMAR, a pioneer in the development of commercial fishing sonar for 45 years, is widely recognized as the leading U.S. manufacturer of advanced marine sonar systems for fish detection, navigation and security. WESMAR sonar systems are used by tens of thousands of commercial fishing vessels, yachting and sport fishers around the world. And WESMAR's navigational and security sonars are the systems of choice for recreational and cruise vessels, around the world for underwater surveillance and navigation.



•Navigation and Security

WESMAR's powerful EV850 Expedition Vessel Navigation and Security Sonar addresses the navigation and safety of yachts at anchor or underway. Thanks to power and beam angle, this sonar tracks swimmers and other targets in real time, painting a picture of what is happening under boats like never before possible.

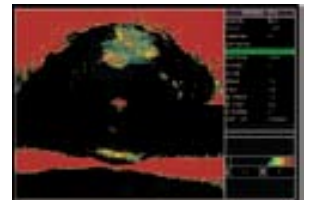
EV850 Security and Navigation Sonar Hoist and Screen



•Fish Finding

WESMAR's amazing searchlight sonars with WESMAR developed electronic stabilization and powerful, directed sonar beam has opened fishing opportunities for fishing fleets and sport fishing vessels throughout the world.

HD850 Sonar Screen



Western Marine Electronics 12140 NE 200th Street, Woodinville, WA 98072
Tel: (425) 481-2296 Fax: (425) 486-0909 www.wesmar.com bsentz@wesmar.com

PRODUCT WARRANTY

Commercial warranty and consumer limited warranty, disclaimer, and remedies. Seller warrants title, materials, and workmanship on equipment, except components manufactured by others for which seller assigns, as permitted, the original manufacturer's warranty. Seller's warranty period for all applicable express or implied warranties shall be ninety (90) days after installation or one (1) year after date of shipment to the original buyer, whichever time period expires first. Nonconforming equipment reported to seller during the applicable warranty period and returned to seller at buyer's expense and risk shall be repaired, or replaced at seller's option. If seller is unable or unwilling to repair or replace such reported and returned nonconforming equipment within a reasonable time, then buyer shall be entitled to a refund of the purchase price of the equipment as buyer's sole remedy. This paragraph sets forth buyer's exclusive remedies for nonconforming goods. This commercial warranty and consumer limited warranty is in lieu of all other warranties, express or implied, including design, course of dealing, merchantability, and fitness for a particular purpose.

NOTE: LIMITATION OF SELLER'S COMMERCIAL AND CONSUMER LIABILITY. Seller shall not be liable on any claim for loss of use, revenue, or profit, for injury, or for any other incidental or consequential damages, regardless of the basis for buyer's claim(s), including, but not limited to, the law of contract, warranty, or tort. In no case shall seller's liability on any claim(s) exceed the amount paid to seller for the purchased goods.