

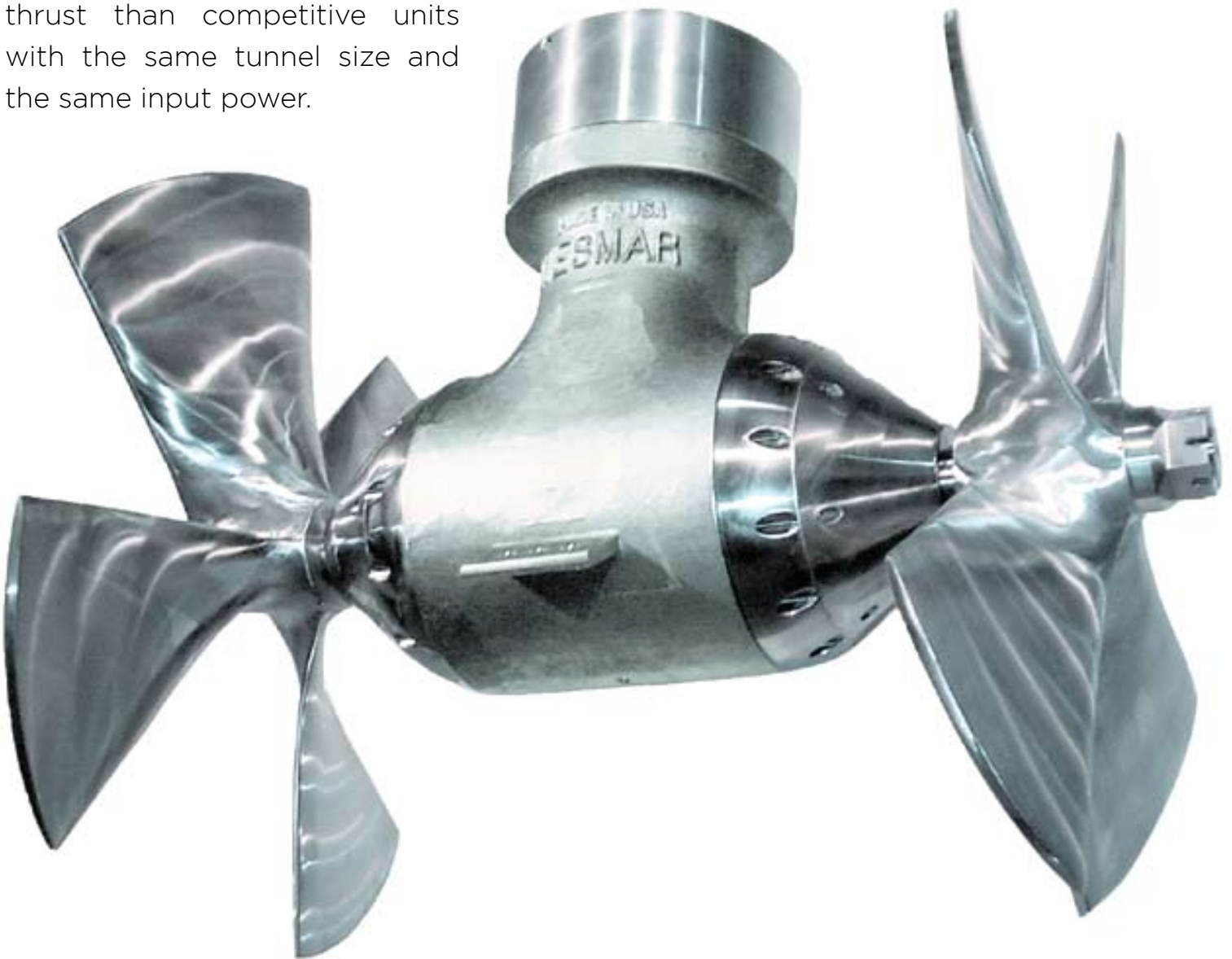


WESMAR™

Commercial Bow Thrusters

WESMAR Innovation

The counter rotating dual prop design is WESMAR's invention, and provides up to 40% more thrust than competitive units with the same tunnel size and the same input power.



Built Rugged for the Toughest Jobs in the Most Demanding Environments

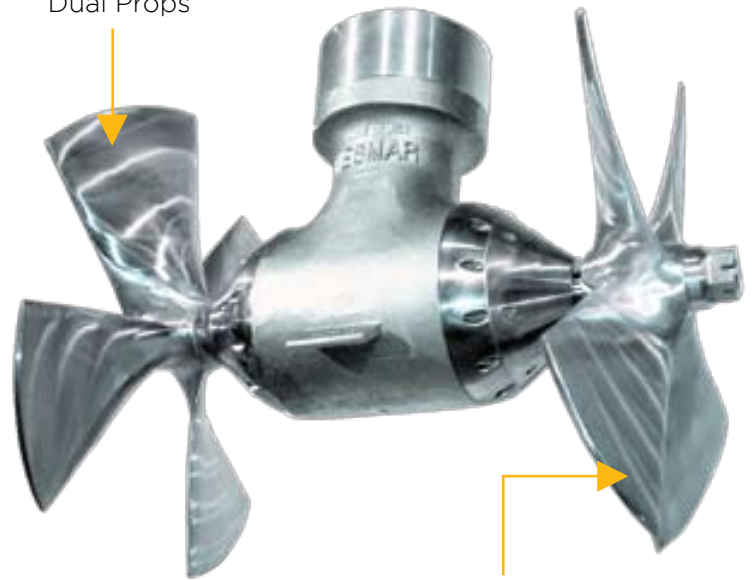
Built Rugged

For the Toughest Jobs in the Most Demanding Environments

Backed by 45 years of experience in the design of rugged underwater equipment for work boats, commercial fishing boats, yachts, excursion vessels, and ships of the world's navies, WESMAR Thrusters are built for the toughest of sea conditions.

The WESMAR design provides twice the structural integrity and safety to a vessel. All the bow thruster components are made of stainless steel: the 4-blade Kaplan props; the drive legs; the shaft; the shafting material; bearing carriers; and the seal carriers. Some systems are ABS Design Approved for Dynamic Positioning I and II.

Counter Rotating
Dual Props



Stainless Steel or NiBrAl Props

WESMAR Thrusters work in rugged, crowded and challenging environments around the world aboard:

- Charter Boats
- Crew Boats
- Cruise Ships
- Deep Draft Vessels
- Dinner Cruise & Tour Boats
- Diver Boats
- Ferries
- Fire Boats
- Fishing Boats
- Gaming Vessels
- Jack up Rigs & Lift boats
- Offshore Supply Vessels
- Passenger & Research Vessels
- Ro-Ro Boats
- Search & Rescue Vessels
- Supply Boats
- Towboats
- Tractor Tugs & Tugboats
- Utility & Work Boats

Where our thrusters work and what our customers say:

Three Forty Three

Sophisticated New York City Fireboat



The new 137-foot Fireboat "Three Forty Three" named for the firefighters who lost their lives on 9/11, is one of the most sophisticated fireboats in the world. It is designed for emergency work on the Hudson River in Manhattan. The power and proportional control provided by the WESMAR Bow Thruster, allows this fast-response vessel to hold snug against the larger ferries to safely evacuate people in an emergency.

Installation by WESMAR dealer Gulf Coast Air and Hydraulics, Mobile, AL

WESMAR Thruster Features

High Quality, Low Maintenance, Stainless Steel Thrusters

Features

- Commercial grade bow/stern thrusters
- 5 to 490 horsepower
- Efficient 8 to 48-inch counter rotating dual props
- Up to 40% more thrust over competitors
- Optional: Pre-mounted in Steel or Aluminum Tubes

Hydraulic, AC, Direct Drive and DC Operation

- Provides the most thrust per input horsepower
- Dynamic Power Control for easy maneuvering
- Optional proportional controls
- Heavy duty stainless steel casting
- Low maintenance
- Easy Upgrade or Retrofit
- Built rugged for reliable operation

Key features of WESMAR's DC Thrusters

- No thermal shutdown with DC Pro Motors
- Easy drop-in replacement for competitive units
- Long lasting investment

The WESMAR Difference

WESMAR Thrusters are manufactured to the highest standards and have been designed for maximum durability and reliability. Technical support is available around the world from a team of professional service personnel. WESMAR can build or ship most parts to any destination in the world within 24 hours.

High quality seals are fitted to the input and output shafts to prevent water ingress and oil leakage. All seals can be replaced without dismantling the complete thruster unit.

WESMAR is widely respected for its international business and business partnerships around the world, recipient of the prestigious 'Trader of the Year Award' for its outstanding achievements in international trade and twice as a recipient of the coveted US Department of Commerce E Award for Export Excellence.

Where our thrusters work and what our customers say: continued

Cape Express

Cargo Vessel



"The cargo vessel Cape Express is one of five boats we own equipped with WESMAR Thrusters. She travels throughout the Caribbean delivering to shallow water ports working in heavy current, often in ports without bulkheads. We require a rugged bow thruster to push this shallow draft 190-foot vessel, full of cargo, and to hold its position. The powerful WESMAR dual prop, counter rotating thruster is performing very well for us."

Steve Ganoë, owner G&G Shipping and St. John's Shipbuilding, Palatka, FL

Willard Marine Fire Boat

Search and Rescue Vessel



"We recently installed a V2-12 counter rotating hydraulically driven bow thruster on this 17-meter search and rescue boat being used by a foreign navy. We have confidence in the WESMAR thrusters, which we have been using for several years. They are powerful, reliable and easy to install."

Wen Raymundo, Engineering Manager, Willard Marine, Inc., Anaheim, CA

Standardize with WESMAR Products

WESMAR brings over four decades of design and manufacturing to the marine industry, providing equipment to commercial, private and government operations around the world. WESMAR's network of support includes over 350 trained service personnel, dealers and distributors who are dedicated to customer support.

•Anchor Windlass



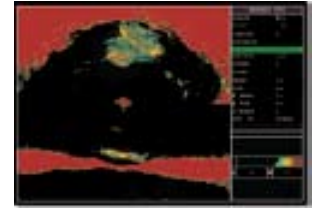
WESMAR's stainless steel anchor windlass is uniquely designed with an electronically driven magnetic chain counter imbedded in the housing.

•Roll Fin Stabilizers



WESMAR's cutting-edge roll fin stabilizers vastly improve vessel handling and safety, save fuel, and provide exceptional comfort for passengers and crew. WESMAR's stabilizers electronically adjust to correct up to 90% of the rolls, resulting in more efficient and relaxed traveling.

- FISH DETECTION, NAVIGATION AND SECURITY SONAR
With WESMAR's advanced EV850 technology, you can monitor the waters around your vessel for safety and security 24 hours a day. The powerful narrow beam will give an extensive detailed picture underwater from surface to bottom, 360 degrees around the boat, at ranges never before achieved.



WESMAR's HD850 searchlight sonar has been installed by commercial vessels that operate in the world's most challenging oceans. Thanks to active stabilization and advanced electronics and transducer design the system has better directivity. Dispersed fish and hard to mark fish are detected clutter-free. It tackles the tough challenge of seeing fish close to the bottom. It will pay for itself sometimes the first trip out!

WESMAR also manufactures a full line of Trawl sonars, Bow and Stern Thrusters for yachts and sportfishing, and Auxiliary Propulsion (Get-Home) System.



DC Pro Thrusters



Trawl Sonar



APU



Western Marine Electronics 12140 NE 200th Street, Woodinville, WA 98072

Tel: (425) 481-2296 Fax: (425) 486-0909 www.wesmar.com bsentz@wesmar.com

PRODUCT WARRANTY

Commercial warranty and consumer limited warranty, disclaimer, and remedies. Seller warrants title, materials, and workmanship on equipment, except components manufactured by others for which seller assigns, as permitted, the original manufacturer's warranty. Seller's warranty period for all applicable express or implied warranties shall be ninety (90) days after installation or one (1) year after date of shipment to the original buyer, whichever time period expires first. Nonconforming equipment reported to seller during the applicable warranty period and returned to seller at buyer's expense and risk shall be repaired, or replaced at seller's option. If seller is unable or unwilling to repair or replace such reported and returned nonconforming equipment within a reasonable time, then buyer shall be entitled to a refund of the purchase price of the equipment as buyer's sole remedy. This paragraph sets forth buyer's exclusive remedies for nonconforming goods. This commercial warranty and consumer limited warranty is in lieu of all other warranties, express or implied, including design, course of dealing, merchantability, and fitness for a particular purpose.

NOTE: LIMITATION OF SELLER'S COMMERCIAL AND CONSUMER LIABILITY. Seller shall not be liable on any claim for loss of use, revenue, or profit, for injury, or for any other incidental or consequential damages, regardless of the basis for buyer's claim(s), including, but not limited to, the law of contract, warranty, or tort. In no case shall seller's liability on any claim(s) exceed the amount paid to seller for the purchased goods.