



# WESMAR™

## ROLL FIN STABILIZERS

Comfort At Your Fingertips: Wherever in This World You Travel  
Versatile electronic roll fin stabilizer systems for boats 30 feet and above.



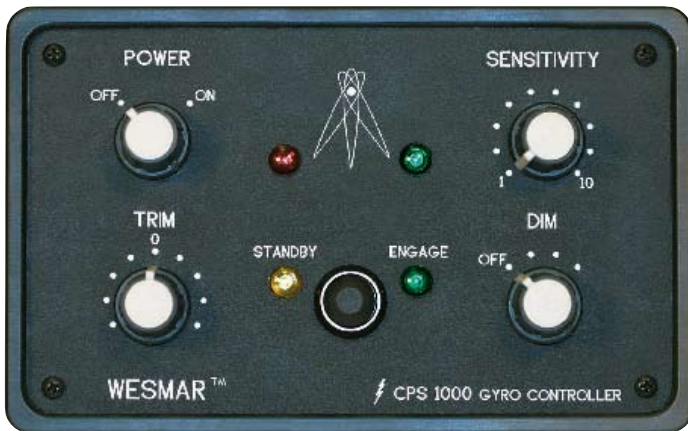
- Proven Fuel Saver
- Smarter, faster, more efficient
- Lightning speed reaction
- Fast response for all vessels
- Adjustable sensitivity and heel/trim control
- Maintenance Free

WESMAR's Electronic Gyro is Faster, Sampling and Correcting Roll 1000 Times per Second!

# Exceptional Performance

## Electronic Gyro System Delivers Lightning Speed Reaction

WESMAR's electronic gyro system samples at 1000 times per second delivering lightning speed reaction for exceptional performance. The electronic gyro sensor sends information about roll velocity and acceleration directly to WESMAR's proportional valves, which react instantaneously to rotate the fins. When a desired lift is achieved to counteract the rolling force of a wave, WESMAR's closed proportional hydraulic system instantly interacts with the electronic gyro to correct the rolling. This coordinated response stabilizes the vessel immediately.



CPS 1000 Electronic Gyro Console



Electronic Gyro



Remote Station

### WESMAR's Roll Fin Stabilizer 2.5 to 30 sq. ft. fins

- Heel control on command
- Console sensitivity adjustment for fin reaction time
- LED dimmer control switch
- Splashproof switches and LEDs
- Optional remote switch
- Unique electronic gyro: 1000 cycles per second
- Electronically adjusts for up to 90% of the roll
- Rugged, triple layer fin construction
- Electronic upgrade packages
- 12 or 24 VDC systems available
- No hydraulic hoses to the gyro compared to as many as 6 additional hoses on competitive hydraulic gyros
- Fins can be electronically/hydraulically centered to least resistance for true null position, requiring no haul out
- No moving parts in electronics, including the gyro.
- No gyro adjustments
- No electronic maintenance
- Easy to install

### Where our stabilizers work and what our customers say:

**This is a different boat thanks to the WESMAR stabilizers**  
47 foot MY SPOTT



"The owner wanted stabilizers that would keep his passengers from getting seasick and his children safe in choppy waters. We installed the WESMAR stabilizers and he is really the happiest customer in the world, saying his boat was a different boat with the stabilizers installed. Glasses, bottles and other objects no longer move around during passage."  
*Pierre Marechal, Manager, Arie de Boom Services, France*

# The WESMAR Advantage:

## Quality Design and Experience

### The Advantages of Owning a WESMAR Stabilizer System

- Fuel Savings
- No Maintenance required
- User friendly electronic design
- Easier to install than any stabilizer on the market
- Extremely high quality, durable equipment
- WESMAR's network of support includes over 350 trained service personnel, dealers and distributors who are dedicated to customer satisfaction.

### Importance of Solid, Quality Design

- Buoyant hydrodynamic designed fin to minimize drag
- Fiberglass shell, high density foam core impervious to saltwater
- Have load capacities 10 times that of steel roller

bearings used by competitors

- CPS 1000 console is 5 times faster than the competition
- Stand alone gyro adjustments and additional inputs not required

### The Power of Experience

- System software has been fine-tuned over the years to essentially eliminate adjustments after installation
- WESMAR brings 45 years of experience designing and manufacturing equipment that operates underwater in the most violent of oceans and challenging of lakes. We provide rugged and reliable equipment to the recreational, commercial and government marine operators throughout the world.

## Where our stabilizers work and what our customers say: continued

### WESMAR stabilizers add comfort and speed

115 foot MY KALEEN



"We now travel along at 15.23 knots, up from 12,8, at the same power and setting. As for the comfort, she used to roll around like a cork in the bathtub. With the WESMAR stabilizers she travels steady and straight. This is a good system."

*Captain Peter Grocock, MY Kaleen*

### Passenger ferry saves fuel, offers smooth rides

105 foot passenger ferry VICTORIA EXPRESS

120 foot passenger ferry VICTORIA EXPRESS II



"Our passengers ride in incredible comfort and we consume a minimum amount of fuel. In addition, the WESMAR stabilizers lessen crew fatigue, and allow our operators to maintain speed even in rough weather. We love them."

*Captain Jack Harmon, owner of the Victoria Express passenger ferry service [www.victoriaexpress.com](http://www.victoriaexpress.com)*

# Hydraulic Components

Each System Includes One Set of Fins, Electronics (12 or 24V), & Hydraulics

## 10 Gallon Hydraulic Reservoir Tank with Centralized Components; Vertical or Horizontal Setup

Hydraulics Tank Design Leads the Industry. Maintenance free actuators and designed for streamlined installation, WESMAR's advanced design hydraulic tank incorporates a hydraulic manifold, high-pressure filter, electronic J-box and cooler in one system. They are all mounted, plumbed and wired together. The use of centralized components greatly reduces installation time and potential for error.



## Hydraulic Pump

SAE-A 2 bolt or SAE-B 2-bolt



## Optional Stabilizer Equipment

### Kelp Cutters

Stainless Steel. Two per system. Prevents kelp and other debris from collecting on the stabilizer shaft between fin top and hull.



### Mahogany Hull Block

For fiberglass or wood installations



## Standardize with WESMAR Products

WESMAR also manufactures a full line of Searchlight sonar, Trawl sonar, Bow and Stern Thrusters for yachts and sportfishing, and Auxiliary Propulsion (Get-Home) System.



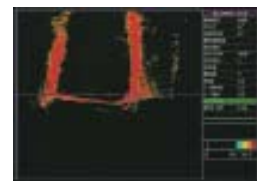
DC Pro Thrusters



Trawl Sonar



APU



EV850 Navigation and Security Sonar and Hoist



**WESMAR Western Marine Electronics**

Telephone: (425) 481-2296 • Fax: (425) 486-0909

E-mail: bsentz@wesmar.com • www.wesmar.com

### PRODUCT WARRANTY

Commercial warranty and consumer limited warranty, disclaimer, and remedies. Seller warrants title, materials, and workmanship on equipment, except components manufactured by others for which seller assigns, as permitted, the original manufacturer's warranty. Seller's warranty period for all applicable express or implied warranties shall be ninety (90) days after installation or one (1) year after date of shipment to the original buyer, whichever time period expires first. Nonconforming equipment reported to seller during the applicable warranty period and returned to seller at buyer's expense and risk shall be repaired, or replaced at seller's option. If seller is unable or unwilling to repair or replace such reported and returned nonconforming equipment within a reasonable time, then buyer shall be entitled to a refund of the purchase price of the equipment as buyer's sole remedy. This paragraph sets forth buyer's exclusive remedies for nonconforming goods. This commercial warranty and consumer limited warranty is in lieu of all other warranties, express or implied, including design, course of dealing, merchantability, and fitness for a particular purpose.

**NOTE: LIMITATION OF SELLER'S COMMERCIAL AND CONSUMER LIABILITY.** Seller shall not be liable on any claim for loss of use, revenue, or profit, for injury, or for any other incidental or consequential damages, regardless of the basis for buyer's claim(s), including, but not limited to, the law of contract, warranty, or tort. In no case shall seller's liability on any claim(s) exceed the amount paid to seller for the purchased goods.