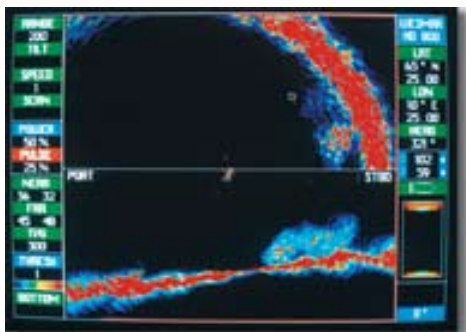


# HD800 Sonar

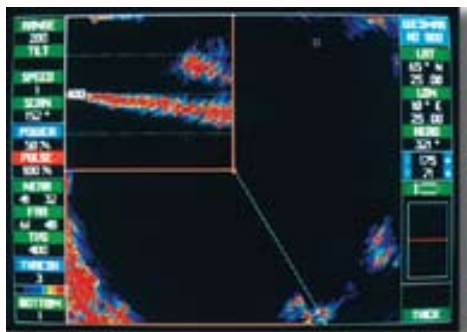
## Update to the Popular Searchlight Sonar

The WESMAR HD800 Sonar is a popular and dependable searchlight sonar. It features fantastic color readings and is equipped for both purse seining and trawling.



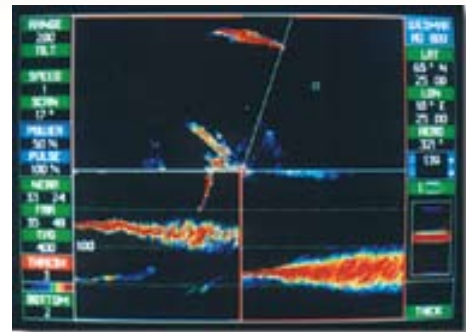
*The HD800 in the Split Screen Mode.*

The top screen shows fish off the bottom to starboard and the lower screen shows a vertical profile of the fish school.



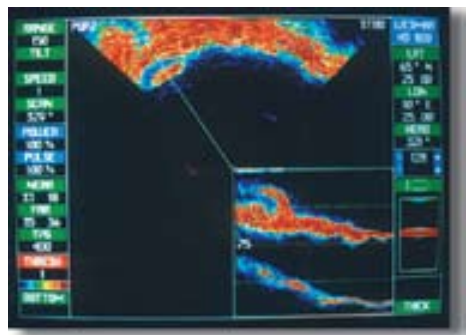
*The HD800 in Dual Screen.*

The full screen sonar shows two small schools, lower right. The upper left is a vertical profile of one of the schools.



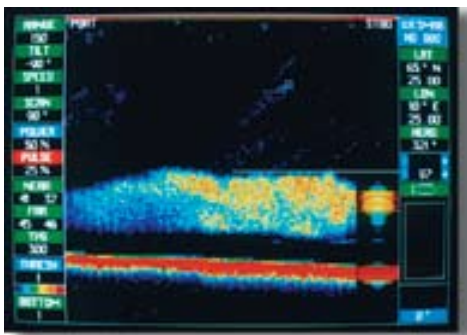
*The HD800 in Split Screen.*

The top screen display shows the system scanning the surface for herring; lower left is a profile of surface fish and shows an additional school on the bottom. The lower right is in bottom profile mode.



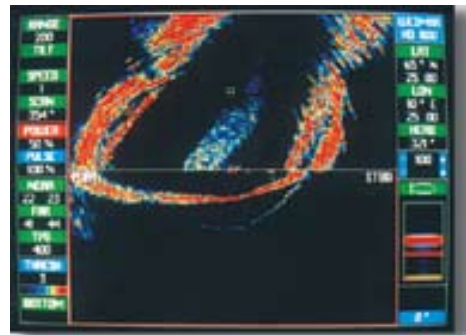
*The HD800 in Dual Screen Mode.*

Here the sonar is scanning the bottom for fish. What seems to be fish off the bottom profiles as a pinnacle.



*The HD800 in Video Sounder Mode.*

This shows a huge school of herring with the fishlupe to the right. The transducer is stabilized for perfect discrimination.



*The HD800 in Split Screen.*

This screen shows the vessel navigating a narrow channel as another passes to port. Complete profile of the channel is shown in the lower screen.



# HD800: Two Sonars in One

The HD800 Sonar features a number of different modes to reflect as much information as possible.

**1. Forward and Profile Modes** Profile mode operates in conjunction with forward scanning mode.

**2. Multiple Display Windows** The HD800 screen display options include full screen sonar with fishlupe, full screen bottom profile with fishlupe, and full screen sounder display.

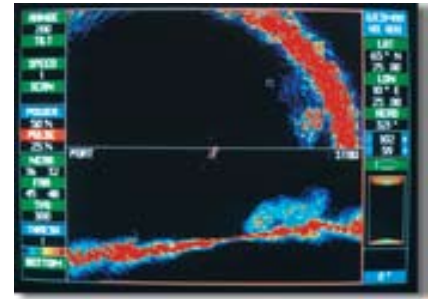
**3. 100% More Target Colors** There are 16 brilliant target colors to choose from and adjustable sonar functions for customizing your sonar's color display.

**4. Seamless Programing Adjustments** Like all WESMAR Sonars, the HD800 is designed for easy operation. The dual screen and split screen modes each have separate controls that can be programed and preset to the owners' specifications. Range, Near Gain, Far Gain, TVG, Thresholds, Scan Speeds, Sector Sizes, and numerous color enhancement terminals can be manipulated by simply moving a switch.

**5. Power Boost Mode** Power Boost mode instantly provides extra long pulse width, dramatically extending range. WESMAR's selection possibilities are enormous; operators can choose pulse width options from 3 to 100%.

**6. Instant Sector Change Mode** A simple turn of the bearing knob instantly repositions the soundbeam on the school of fish, saving time and increasing your chance of constantly monitoring the fish.

**7. Extended Range Electronics** With an elite transmitter, receiver, and preamp located on the hoist, WESMAR has extended detection range significantly.



## The HD800 in Split Screen mode.

The top half of the screen is scanning forward, marking herring off the bottom. The lower half shows the sonar profiling the bottom below and to the sides of the vessel. As the HD800 profiles the bottom, the school of herring marks to starboard off the bottom.

## Unique Split Screen Approach

The HD800 is actually two sonars in one. With split screen for trawlers and a dual screen for purse seiners, this sonar scans vertically and horizontally, a truly revolutionary application. In split screen, the operator of an HD800 can scan horizontally, in front of the vessel to locate the fish, and vertically to follow the target close to the bottom, under and to the sides of the boat, as the vessel moves forward. This scanning advantage has never been available to sonar operators before.

## Dual Screen Action

In the full sonar screen format, the HD800's full screen feature empowers operators to scan in the traditional forward mode while providing instant soundbeam manipulation that shows on an overlay screen. The simple flip of a switch immediately maneuvers the soundbeam to vertical scanning, producing a window on the sonar that shows the captains the density or size of the fish school they are monitoring. In Dual Screen mode 75% of the screen shows the sonar searching forward, and 25% displays the fish school in a vertical plane.



## Western Marine Electronics

12140 NE 200th Street, Woodinville, WA 98072

Tel: (425) 481-2296 Fax: (425) 486-0909

www.wesmar.com dsoderberg@wesmar.com

## PRODUCT WARRANTY

Commercial warranty and consumer limited warranty, disclaimer, and remedies. Seller warrants title, materials, and workmanship on equipment, except components manufactured by others for which seller assigns, as permitted, the original manufacturer's warranty. Seller's warranty period for all applicable express or implied warranties shall be ninety (90) days after installation or one (1) year after date of shipment to the original buyer, whichever time period expires first. Nonconforming equipment reported to seller during the applicable warranty period and returned to seller at buyer's expense and risk shall be repaired, or replaced at seller's option. If seller is unable or unwilling to repair or replace such reported and returned nonconforming equipment within a reasonable time, then buyer shall be entitled to a refund of the purchase price of the equipment as buyer's sole remedy. This paragraph sets forth buyer's exclusive remedies for nonconforming goods. This commercial warranty and consumer limited warranty is in lieu of all other warranties, express or implied, including design, course of dealing, merchantability, and fitness for a particular purpose.

**NOTE: LIMITATION OF SELLER'S COMMERCIAL AND CONSUMER LIABILITY.** Seller shall not be liable on any claim for loss of use, revenue, or profit, for injury, or for any other incidental or consequential damages, regardless of the basis for buyer's claim(s), including, but not limited to, the law of contract, warranty, or tort. In no case shall seller's liability on any claim(s) exceed the amount paid to seller for the purchased goods.