



Your Partner In Fish Detection

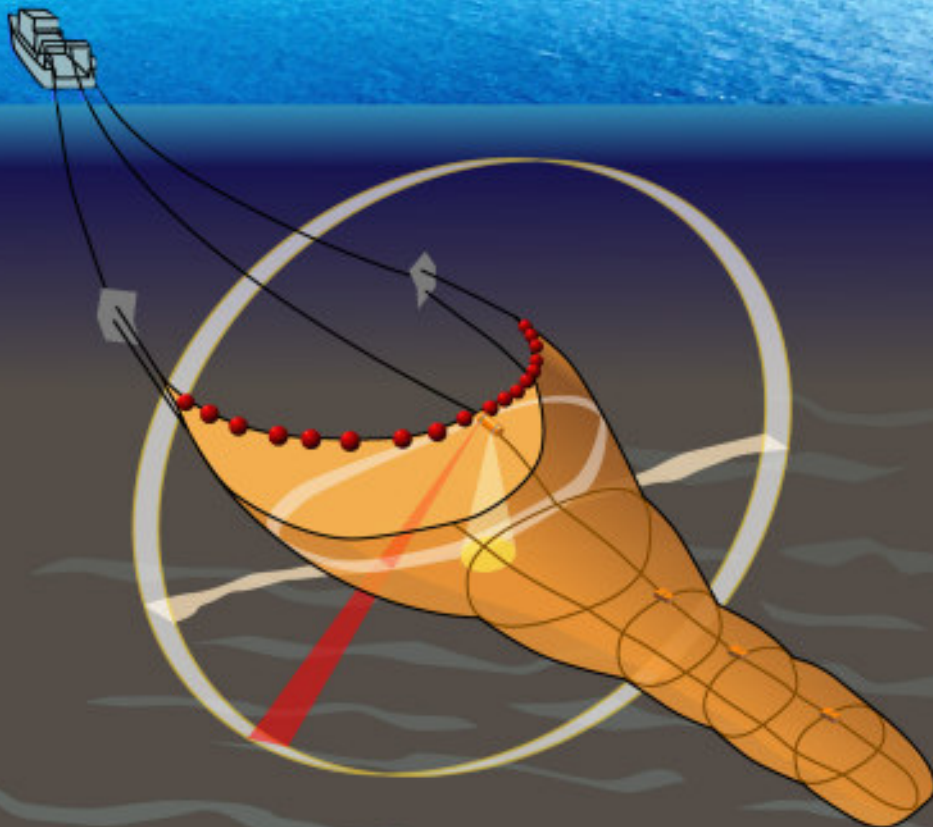
TCS 335 & TCS 345 Mini Trawl Sonars

***A trawl monitoring technology breakthrough
for small and medium trawlers.***



**TCS345 Includes
Depth Sensor!**

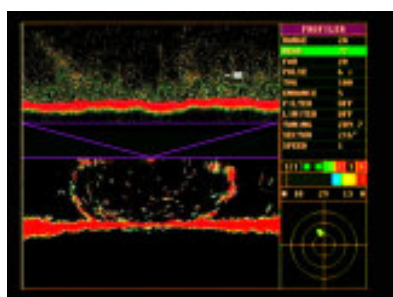
***360 degree net profile
High definition net sounder
Cod end monitor
Very lightweight - Only 12kgs***



TCS 335 Trawl Sonar



Two views: 360 degree net profile and down sounder for monitoring fish, footrope, and changes to the net.



The new TCS335 is designed for bottom and semi-pelagic trawling. Built rugged, yet lightweight, it only adds 4.5kg to the headrope when fishing.

There's no console to install. No more reaching to turn a knob. Now you can have full control over your sonar settings with the pistol grip control, plus you can have more than one installed at different stations for easier sonar monitoring and access.

Three Modes of Operation:

Net Profile: 360 degrees or sector. High frequency, 310 kHz narrow fan beam will keep watch as the footrope tends the bottom or not. Monitor fish as they enter, go over or under the net. Watch the net change shape with adjustments and the effect of cross currents.

Down Sounder: Full screen down sounder. Using 200 kHz and a 28 degree sound beam on a full screen display. No fish will go undetected.

Split screen: Down Sounder over Net Profile. Two transducers operating at the same time for a double view. The down sounder monitors the footrope and bottom and marks fish in the center, at the same time the profile transducer scans the net opening in high resolution. Make sure fish are not passing under the net by using a zoom window.

Specifications

Net Sonar Unit

Working depth:

1000m

Frequency:

310 kHz 2.3° x 25°

200 kHz Down Sounder 28° x 28°

Profile:

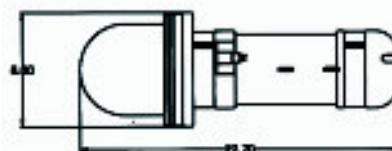
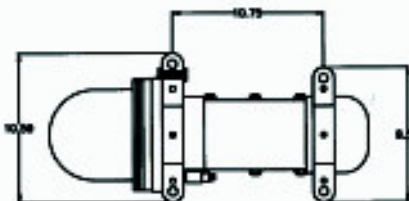
Sector up to 360°

Sensors:

Four catch sensor receiver

Weight:

Dry 12 kg, In Water: 4.5 kg



Other Features

A level indicator displays the pitch and roll of the headrope unit. Check the effect current has on the net and the installation of the headrope unit.

Quick 3rd wire disconnect. A new 3rd wire strain relief design makes it easy to remove the 3rd wire from the headrope unit.

Talking eggs: Never miss a catch sensor when it triggers. A built-in speaker will sound, alerting the wheelhouse of the triggered egg and its number.

Additional Equipment

PCS75 Catch Sensor



- ▷ Programmable number
- ▷ High power
- ▷ 3000ma battery capacity
- ▷ Lightweight
- ▷ Sensor can be removed from carrier

BSW 1200 Cable Winch



- ▷ Rugged construction and quality components
- ▷ Easy to install and run
- ▷ Use with the newest WESMAR TCS335 trawl sonar

PRODUCT WARRANTY

Commercial warranty and consumer limited warranty, disclaimer, and remedies. Seller warrants title, materials, and workmanship on equipment, except components manufactured by others for which seller assigns, as permitted, the original manufacturer's warranty. Seller's warranty period for all applicable express or implied warranties shall be ninety (90) days after installation or one (1) year after date of shipment to the original buyer, whichever time period expires first. Nonconforming equipment reported to seller during the applicable warranty period and returned to seller at buyer's expense and risk shall be repaired, or replaced at seller's option. If seller is unable or unwilling to repair or replace such reported and returned nonconforming equipment within a reasonable time, then buyer shall be entitled to a refund of the purchase price of the equipment as buyer's sole remedy. This paragraph sets forth buyer's exclusive remedies for nonconforming goods. This commercial warranty and consumer limited warranty is in lieu of all other warranties, express or implied, including design, course of dealing, merchantability, and fitness for a particular purpose.

NOTE: LIMITATION OF SELLER'S COMMERCIAL AND CONSUMER LIABILITY. Seller shall not be liable on any claim for loss of use, revenue, or profit, for injury, or for any other incidental or consequential damages, regardless of the basis for buyer's claim(s), including, but not limited to, the law of contract, warranty, or tort. In no case shall seller's liability on any claim(s) exceed the amount paid to seller for the purchased goods.

Western Marine Electronics, 14120 NE 200th Street, P.O. Box 7201, Woodinville, WA 98072 USA

TEL: (425) 481-2296 FAX: (425) 486-0909, EMAIL: cjones@wesmar.com, www.wesmar.com