

# With the NEW WESMAR SS395 We Can Locate Squid 24 Hours a Day

## “This is a Gigantic Leap”

The Squid fishery has gone from a night time only fishery to a day and night fishery for veteran seiner Mike Weynands.

When WESMAR introduced its new SS395 sonar, Mike was interested. He reports back that ‘he loves it.’

“Now we can find fish in the daylight. Squid ball up at night and are easily visible using light boats; but during the day they scatter and are close to the surface, and this presents a weak target. This new WESMAR is really sensitive and with the ability to fine-tune the colors we can see the squid 24-hours a day.

“The SS395 is easy to operate thanks to the hand held controller. You are right there and can make adjustments without leaving your chair.”

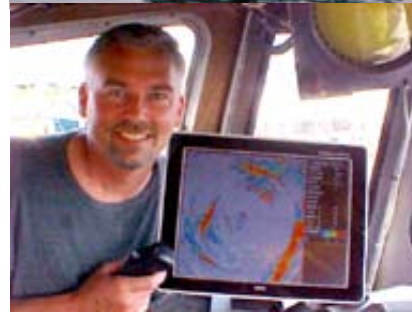
“WESMAR has put a sounder in the 395 and I use it to steam out to the grounds looking for squid. It’s a great way to survey for fish. Then I switch to the split screen mode, sweeping ahead with the sonar while simultaneously profiling the bottom.”

“The colors and the power are the most amazing features to me. For what we do, looking for the sensitive stuff, it’s all in the colors. You can spread the colors on the SS395 so when the squid are dispersed you can see them in color. It makes all the difference,” says Weynands.

He also says the use of innovative technology like the WESMAR allows him to fish with just a 2 person crew. “With fishing so competitive, I see investment in technology as a must.”

This year he will fish squid between 7 and 9 months and the rest of the year fish sardines in Oregon, Washington and California. If the salmon comes back he thinks he will fish salmon between California and Alaska as well. His new WESMAR will be valuable in all three fisheries. “This new system is a gigantic leap in technology.”

Weynands has a long history of fishing and one might even say it’s in his blood. He started at age 12 in Alaska on his father’s purse seiner. Eventually he and his three brothers each had



*Mike Weynands on the F/V Julie Celeste, “The SS395 is easy to operate thanks to the hand held controller.”*

their own seiners and fished the Alaskan waters for over a decade. In the late 1990’s he began taking his 54-foot Marco F/V Julie Celeste to California to purse seine for squid, during the off season, and he always relied heavily on his WESMAR sonar.

**Product Description:** WESMAR’s split-screen display simultaneously shows forward scan and bottom profile on the SS395. Users can select a thickness scan and assess a school of fish to determine its vertical dimension, its size and what obstacles might lie beneath. The SS395 features an ergonomic pistol grip controller, a portable hand-held device that provides instant fish tracking from the captain’s chair or anywhere in the wheelhouse. The unit is available in three frequencies: 160 kHz, 110 kHz, or a 60kHz, and is available in 17 different languages.

