

WESMAR™

Sonar Customer Report



334 Foot Bering Sea C/P Arctic Storm

“With the HD850 we can find the bigger, more profitable fish hiding near the bottom, often very dense but hard to see with sonars of the past”

Brian Styke, Master of the Arctic Storm

Brian Styke, Master of the 334-foot Bering Sea Factory Trawler Arctic Storm, knows the value of WESMAR’s powerful HD850 sonar: “It’s the ability to find the fish other sonars miss.”

“Using the HD850 I have the power to reach farther and with the HD850’s ability to distinguish these targets at long ranges we have the value of locating much more dense schools at greater distances, often missed by other sonars, which are looking closer in. The targets are also easier to chase with the WESMAR. We are looking for schools of larger, more valuable fish. They are often harder to see because they are down low and tight to the bottom.” This ability nets more profitable fish.

Captain Styke fishes in all types of weather. “When the weather is rough the electronically stabilized HD850 soundome holds a sonar picture when others won’t. With other sonars, when the boat plunges up and down, it changes the tilt angle and step-ladders the bottom, distorting and confusing what you are seeing. With the WESMAR HD850 and its precisely stabilized soundbeam, this is all smoothed out.”

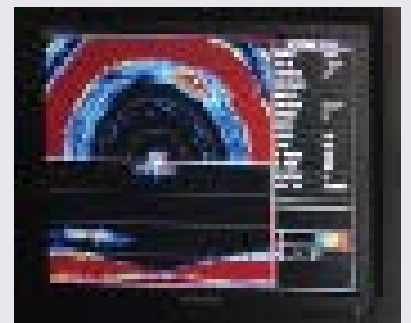
An endorsement of WESMAR’s powerful HD850 sonar from the Master of the C/P Arctic Storm is note worthy. Coming from Brian Styke, a highly experienced captain who is fishing in one of the world’s most violent seas, the endorsement is extremely significant.

With 38 years in the fishing industry 32 as Captain, 20 years as the Master of the Catcher/Processor Arctic Storm, Captain Styke is more than capable of evaluating the WESMAR HD850 system. As for working in violent seas, he qualifies there as well. “My windows are 46 feet above the waterline and sometimes we are looking up at the waves “

With the Pollock B season underway in Alaska, talking by satellite phone, Captain Styke reports he uses the WESMAR HD850 sonar exclusively. “The HD850 is one of our main fishing tools. On our most recent trip we were out 11 days and brought in 1,450 tons. That was a good trip.”



Master Brian Styke, in the wheelhouse of the C/P Arctic Storm.



HD850 Searchlight Sonar in split screen mode. The top half of the screen is in forward scan showing fish off starboard. The bottom half in profile scan with fish off to port.

“The HD850 has a lot of power, more than any other sonar. We can look ahead and pick up the smaller signs at a greater distance. It also has active soundome stabilization, which is working well. I use the new HD850 exclusively now.”

Captain Styke got into fishing at a young age, at 17 got his first job on board a salmon seiner for the summer. After returning he offloaded trawlers on the Seattle waterfront hoping to work on one of them. He was fortunate to be hired by Bernard Hanson, a real innovator in the industry, where he learned his trade. Today he is at the top of his profession as Master of a premier vessel in one of the world’s largest fisheries. The Arctic Storm fishes the Bering Sea Pollock for both A & B seasons as a catcher/processor/freezer. They fill in with Yellow Fin Sole in the winter. In the Spring they do a Washington–Oregon trip as a mother ship processing Pacific Whiting from the delivery boats.

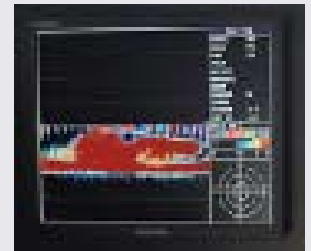
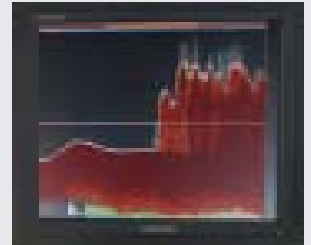
Captain Styke has a crew of 132 in the winter and 128 in the summer.

When asked if the HD850 has saved the vessel money in fuel and/or made them more efficient, Styke explained it this way.

“From an efficiency standpoint, the quicker you locate a catch, the sooner you can reduce your speed. This is one of the critical roles of the sonar.

“When we get a full bag, we bring the doors to the stern then idle around for a while, using less fuel. Its called shortwiring. This happens when we catch fish faster than the plant can process it, and we have to wait for the plant to catch up with us.” (So in essence the faster they find the fish the less fuel they burn.)

Captain Styke says WESMAR and Dennis Soderberg (WESMAR’s Vice President of the Electronics Division) have been very supportive. “I appreciate that WESMAR has listened over the years to what the fishermen have to say about what they need.”



A full bag of Alaska Pollock ready to board the C/P Arctic Storm. Captain Styke found this 100 + ton catch with the WESMAR HD850 sonar and used the WESMAR TCS780 Trawl Sonar to profile the opening of the net. WESMAR Catch Sensors monitored the filling of the cod end.

Screen photos of the TCS780 Trawl Sonar show fish tight to the bottom on dual monitors. Top screen is in sounder mode and bottom screen is in net profile mode.

About the Arctic Storm

The C/P Arctic Storm

Length: 334 feet

Horsepower: 6100

Tonnage: 4068

Products:

- Bering Sea Pollock
- Pacific Whiting surimi and fillet
- Pollock roe
- Fishmeal

WESMAR Equipment on the Arctic Storm

Fish finding electronics:

- WESMAR HD850-110-10 Searchlight Sonar
- WESMAR HD800-110-10 Searchlight Sonar
- WESMAR TCS780 Trawl Sonar System with 4 Sleds
- 12 WESMAR Catch Sensors

WESMAR a Sonar Pioneer

WESMAR pioneered the development of commercial fishing sonar and brought the first solid state sonar to seiners and trawlers in 1965. The company is widely recognized as the leading U.S. manufacturer of advanced marine sonar systems for commercial fishing, defense applications, and the yachting and sport fishing markets. Supported by technical dealers around the world, WESMAR has been serving the commercial fishing fleets and their other markets with state-of-the-art horizontal scanning sonar and trawl sonar for decades. In addition WESMAR develops sonar products for navigation and underwater surveillance.

Captains around the world have been instrumental in assisting WESMAR in the development and testing of a vast range of sonar equipment. These captains compete on some of the most challenging fishing grounds in the world, and in some of the highest stake fisheries. Word of the HD850's success in the Alaska Bering Sea fishery, and that of captains in Australia, China, Russia, and Greece, has added to the popularity of this new sonar.

For years, WESMAR led the industry using gravity stabilization to stay on targets. "That works well until you get into rough water fisheries where fish detection is the most difficult, such as fisheries in the Bering Sea. To separate targets from the bottom you need a very narrow sound beam, which in turn requires very good stabilization," says WESMAR's Dennis Soderberg. "The HD850 has a unique and successful approach to active stabilization, among several other advances. Here is what is new and different about the HD850 sonar that assures maximum performance."

- **A Digital Link** provides a noise free connection from the sonar electronics near the transducer to the computer console in the wheelhouse. Sonar performance on particularly large vessels is limited by electrical interference from processing equipment, generators and electric motors. This type of interference will shorten sonar range. WESMAR's Digital Link is immune to this type of electrical interference when operating at long range. Interconnect cables over 200 meters long are possible.
- **A Heavy Duty Hydraulic Hoist System** designed for the harshest weather conditions extends the urethane soundome up to 1.5 meters below the hull away from air bubbles created by the vessel and weather. No part of the soundome ever touches the insides of the seachest where vessel vibration can enter, reducing performance.
- **Targeted Sonar Beam** with 280 elements all looking in one direction forms a tight beam of directed power. With one-hundred percent of the transducer elements looking in one direction, hard-to-mark dispersed fish are detected at long range.
- **Extremely Precise Active Stabilization** makes a huge difference when the powerful 280-element array is searching for fish close to the bottom.
- **Four Conventional Screen Modes**, including an enhanced down sounder, are displayed on the primary monitor. The new trawl screen feature is displayed on a second monitor. It includes four blowups to tackle the tough challenge of seeing the fish close to the bottom.

WESMAR designs and manufactures its innovative products at an 82,000-foot facility near Seattle, WA, USA. At this location, the company maintains a sophisticated engineering design lab, prototype and test facilities, as well as a completely modern and highly automated manufacturing department.

WESMAR Quality Products



WESMAR™ Your Partner in Fishing

Standardize with WESMAR
Stainless Steel Dual Prop thrusters and stabilizers built for the toughest of sea conditions. Our APU and hydraulic systems take the stress out of unpredictable situations.

Stainless Steel Dual Prop Bow Thruster for 40% More Thrust

Stabilizers Calm the Seas for Crew Safety

APU Get Home System

Hydraulic System

HD850 Searchlight Sonar
No sonar in the world can find dispersed fish like the HD850! WESMAR's Active Transducer Stabilization steadies the sound beam for maximum resolution.

TC5780 Trawl Sonar
Monitor catch volume, catch quality, and save fuel! Some even pay for equipment cost in one day!

TC5780 Split Screen of Net

TC5780 Sled

New Trawl Scan Mode Capable of Showing 30% More Fishable Area!

Split Screen Showing Dispersed Fish

Western Marine Electronics (425) 481-2296 www.wesmar.com



Western Marine Electronics
14120 NE 200th Street, Box 7201
Woodinville, WA 98072 USA

Tel: (425) 481-2296 Fax: (425) 486-0909
dsoderberg@wesmar.com www.wesmar.com

