

Hydraulics & Thruster Customer Report

The WESMAR Hydraulic System powers the bow and stern thrusters and a lot more! This System is Unbelievable!

"WESMAR can be proud of this one. We certainly are."

Steve Wessel, Owner
WESMAC CUSTOM BOATS

WESMAC CUSTOM BOATS of Surry, Maine, is a custom boat builder. Founded in 1984, the company has a reputation for its innovative, light-weight, high-tech hull designs. They recently delivered the Motor Yacht Q2, a beautiful 42-foot cruiser with a WESMAR hydraulic system that operates not only the WESMAR bow and stern thrusters but also five additional onboard electro/hydraulic systems.

"This system is unbelievable. WESMAR set up a hydraulic system to operate their bow thruster and stern thruster, as well as power an anchor windlass, cockpit wash down, forepeak and anchor wash down, transom capstan winch and a trap hauler/anchor hauler...all from one hydraulic system," reported Steve Wessel, owner of WESMAC CUSTOM BOATS.

"The hydraulics are controlled by electric panels. Finger tip operation makes it outstanding. This is a must see system! It is the latest and greatest in high tech design."

We spoke with Wessel just after he returned from a two week long sea trial from Maine to Cape Cod preparing for delivery of the Q2 to its home port in Marion,



WESMAR's Hydraulic System operates the bow and stern thrusters plus five other systems on the boat!

Massachusetts. "The thrusters have a lot of power. The owner of this yacht is a repeat customer of ours and he is familiar with the WESMAR system. We've installed them on other boats he owns and he wanted the WESMAR thrusters on the Q2. But this is a particularly unique system he wanted and we worked closely with Bob Sentz and his team at WESMAR and they

set it all up ahead of time for us," said Wessel.

"This is a very nice pleasure boat and requires top-of-the-line equipment. The WESMAR thrusters have a lot of power and their operation is amazing. The continuous use, proportional control feature (allowing the operator to apply power continuously and at the level

continued on back



Western Marine Electronics
14120 NE 200th Street, Box 7201,
Woodinville, WA 98072 USA

(425) 481-2296 bsentz@wesmar.com www.wesmar.com



WESMAC CUSTOM BOATS

P.O. Box 56, Rt. 172
Surry, ME 04684
(207) 667-4822

sales@wesmac.com
www.wesmac.com

they need) was a major reason the owner of the Q2 wanted the WESMAR system. We could not be more pleased," said Wessel.

The MotorYacht Q2 will be sailing mostly on the U.S. East Coast between Florida and Labrador (off of Newfoundland, Canada). Thanks to the bow and stern thruster and the proportional controls the 42-foot Q2 can be operated and moored by one person if necessary.

Wessel says he chose WESMAR for their service, follow-up, and product quality. "We always receive instantaneous service, including overnight delivery of equipment when needed. Service is everything in our business."

The WESMAC hull is a highly efficient, high performance design with an above-the-waterline style similar to a traditional down east lobster boat. A combination hard

chine, v-bottom, full keel, streamlined stern post and skeg below the waterline set her for good speed and easy maneuverability. WESMAC boats are popular for fishing and cruising. They are highly versatile, have a wide market and are used for commercial fishing, pleasure cruising, fire/rescue, charter and USCG certified passenger vessels and law enforcement vessels.

With these strengths and market diversity, WESMAC boats and WESMAR systems are a good fit. WESMAR's 45 years of sophisticated electronic and mechanical systems design, manufacture and service to the pleasure boat, commercial fishing, work boat, and navy and coast guard vessels around the world place it in the same markets. Both companies bring commercial grade power and strength to everything they produce.



"This is a very nice pleasure boat and requires top-of-the-line equipment. The WESMAR thrusters have a lot of power and their operation is amazing."



WESMAR Quality Products

In addition to powerful and long lasting thrusters, WESMAR offers a wide range of other rugged and reliable products for vessels including:

- Roll Fin Stabilizers

WESMAR's cutting-edge roll fin stabilizers vastly improve vessel handling and safety, save fuel, and provide exceptional comfort for passengers and crew. WESMAR's stabilizers electronically adjust to correct up to 90% of the rolls, resulting in more efficient and relaxed traveling.

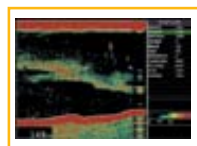


- Anchor Windlass

WESMAR's stainless steel anchor windlass is uniquely designed with an electronically driven magnetic chain counter that is imbedded in the housing. Low maintenance and reliable operation of all stainless steel hardware are the primary objectives behind WESMAR's anchor windlass.

- Auxiliary Propulsion Unit

For an instant, reliable, and alternative source of power with minimal maintenance, WESMAR offers its Auxiliary Propulsion Unit (APU). The APU system provides continuous propulsion when quiet slow speed travel is desired or in the event of a main engine failure.



- Fish Detection, Navigation and Security Sonar

WESMAR's wide range of precision searchlight sonar, designed for yachts and sport fishing boats, gives 360 degrees of detailed information beneath and around the vessel. WESMAR's high tech sonar is a must for every vessel on the open water for unequalled fish detection, navigation, and safe travel.

